

Purposeful Design Transforming the Way We Live

Design Entry Template





Design Entry Template Guidelines

You will find the following slides in this Submission Template with specific titles and requirements for your submission as indicated below. Total number of your submission should not exceed 12 slides, beginning with (Slide 1: Project Name) and ends with (Slide 12: AS Products Specified).

SLIDE 1: **Project Name**

Input a concept title that reflects your idea.

SLIDE 2: **Design Concept**

Describe your concept in a nutshell, keep it within 150 words.
NOTE: You will elaborate more in the Design Story Document.

SLIDE 3: **Design: Floorplan and Elevations**

Organize your drawings to tell your story.

SLIDES 4-9: **Design: Visuals**

Present your concept with your renderings.

- Slide 4: Full Bathroom
- Slide 5: Shower Area
- Slide 6: Toilet Area
- Slide 7: Basin Area
- Slide 8-9: Optional Images

SLIDE 10- 11: **Specifications: Colors, Materials and Finishes**

SLIDE 12: **American Standard Products Specified**

List down the products that are used in your design.

Residential Bathroom Space Design The Growing City

Participant ID: ASDA22-50068





Design Concept

The Growing City

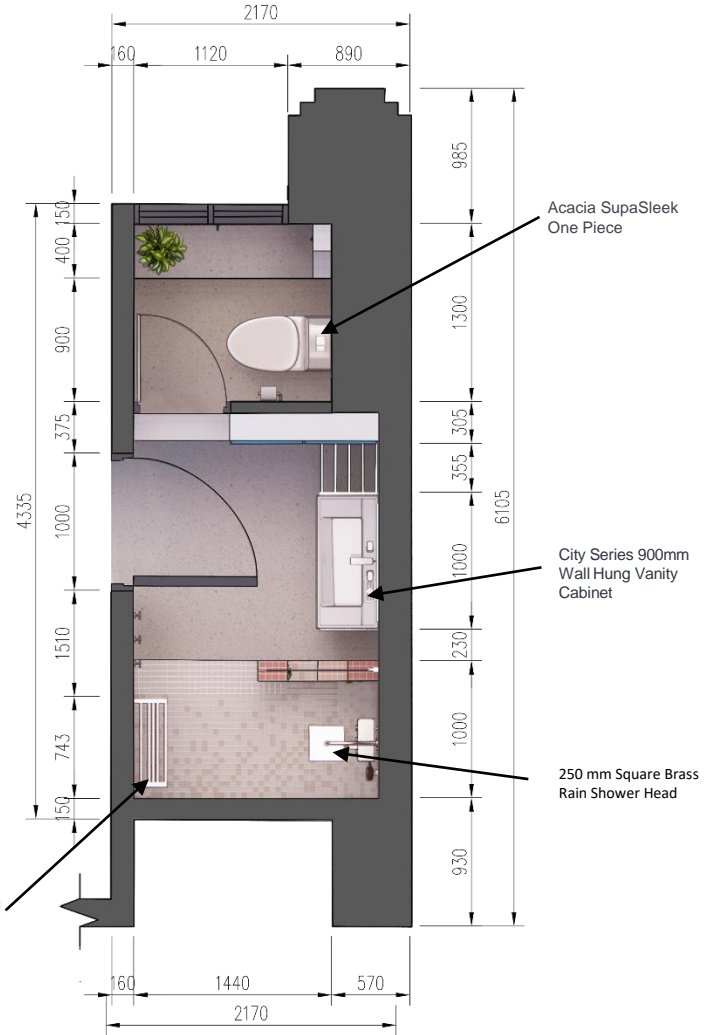
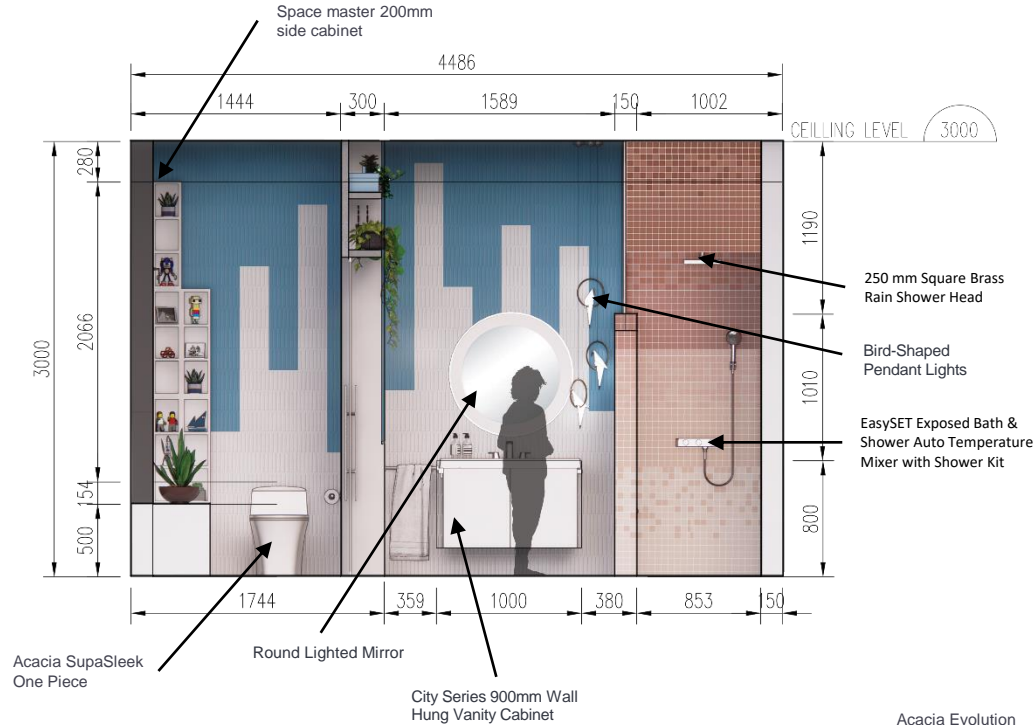
When it comes to the family bathroom, where the whole family uses it, a minimalist design turns out to be the best choice to provide the room with spaciousness by using clear open spaces where natural light comes in that perfect way. By bringing bolder colors and patterns without going overboard into a home to make it more live and fun to use for a family bathroom.

With the limited space for a family bathroom used by more than two people, multi-functional products are needed to save space. With having kids around the house, the bathroom also needs to be accessible safe for the youngest family members always to use the tools and feel secure in the bathroom.

The application of the design will show as the story of urbanization, which can be seen on two wall sides of the bathroom which shows the difference of rural area and urban area. The shower area is the main area, representing a beautiful sunset and sunrise that can be seen permanently in rural and urban areas.



Design: Floor Plan and Elevations

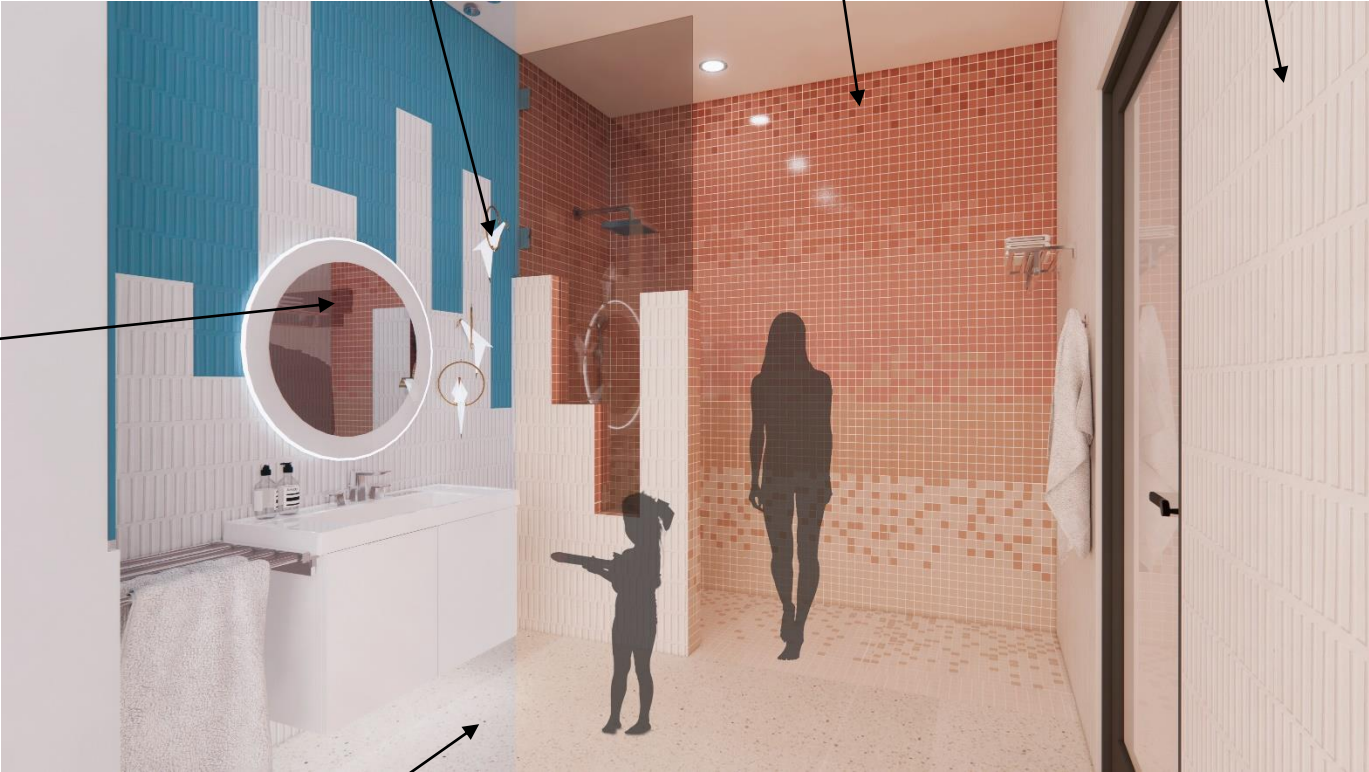


Design Visuals: Full Bathroom

Bird-Shaped
Pendant Lights

300x300 mm Mosaic Glass

White Terre Bianco
Porcelain Tiles (Glazed)



Round Lighted
Mirror

Terrazzo with Honed Finish

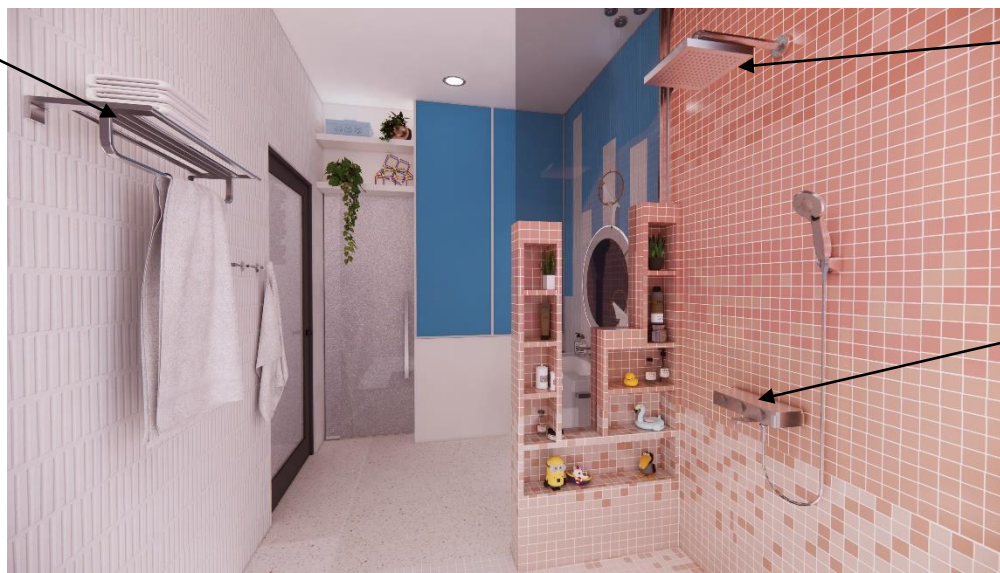
Design Visuals: Shower Area

Terrazzo with Honed Finish



300x300 mm Mosaic Glass

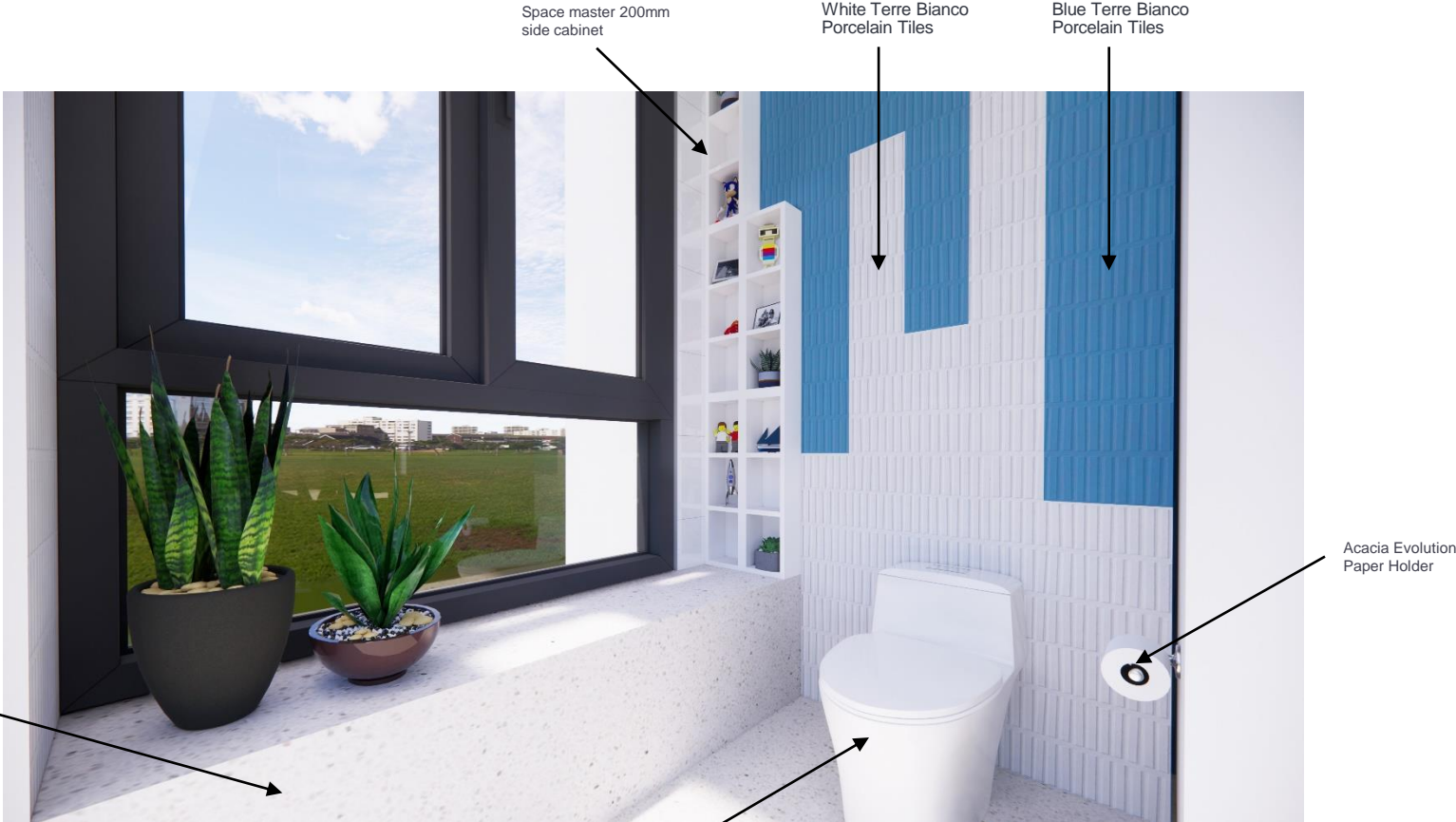
Acacia Evolution Towel Shelf



250 mm Square Brass Rain Shower Head

EasySET Exposed Bath & Shower Auto Temperature Mixer with Shower Kit

Design Visuals: Toilet Area



Design Visuals: Basin Area

Use this text box for description, if required.

Use Space on the right to show basin area visuals.



City Series 900mm Wall Hung Vanity Cabinet

Round Lighted Mirror



**Design
Visuals:
Optional
Images**

Frosted Glass
Door

Built in Cabinet

Built in Shelf

EasySET Exposed Bath & Shower Auto
Temperature Mixer with Shower Kit



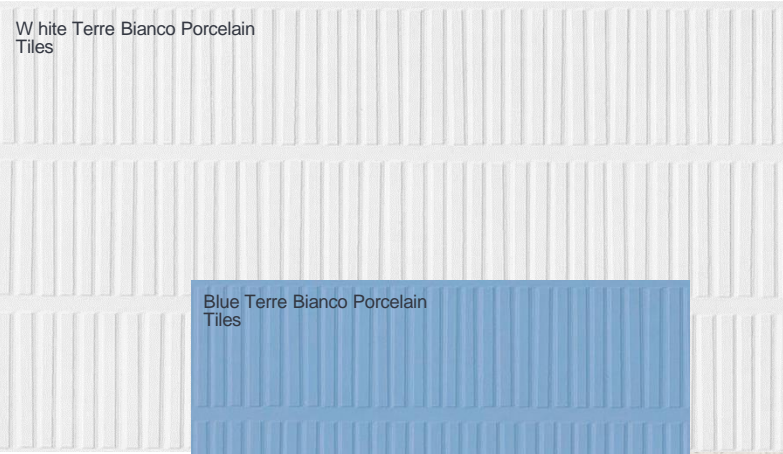
**Design
Visuals:
Optional
Images**

Acacia Evolution
Towel Shelf

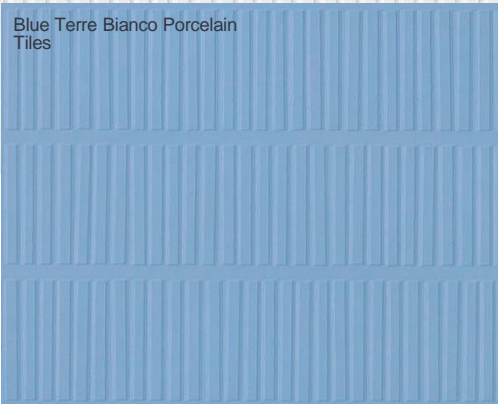
Acacia Evolution
Robe Hook



Specifications: Colors, Materials and Finishes



White Terre Bianco Porcelain Tiles



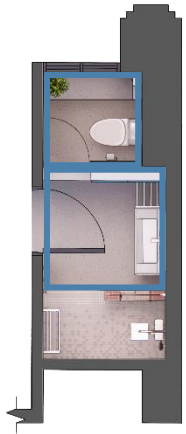
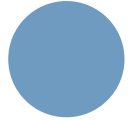
Blue Terre Bianco Porcelain Tiles



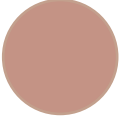
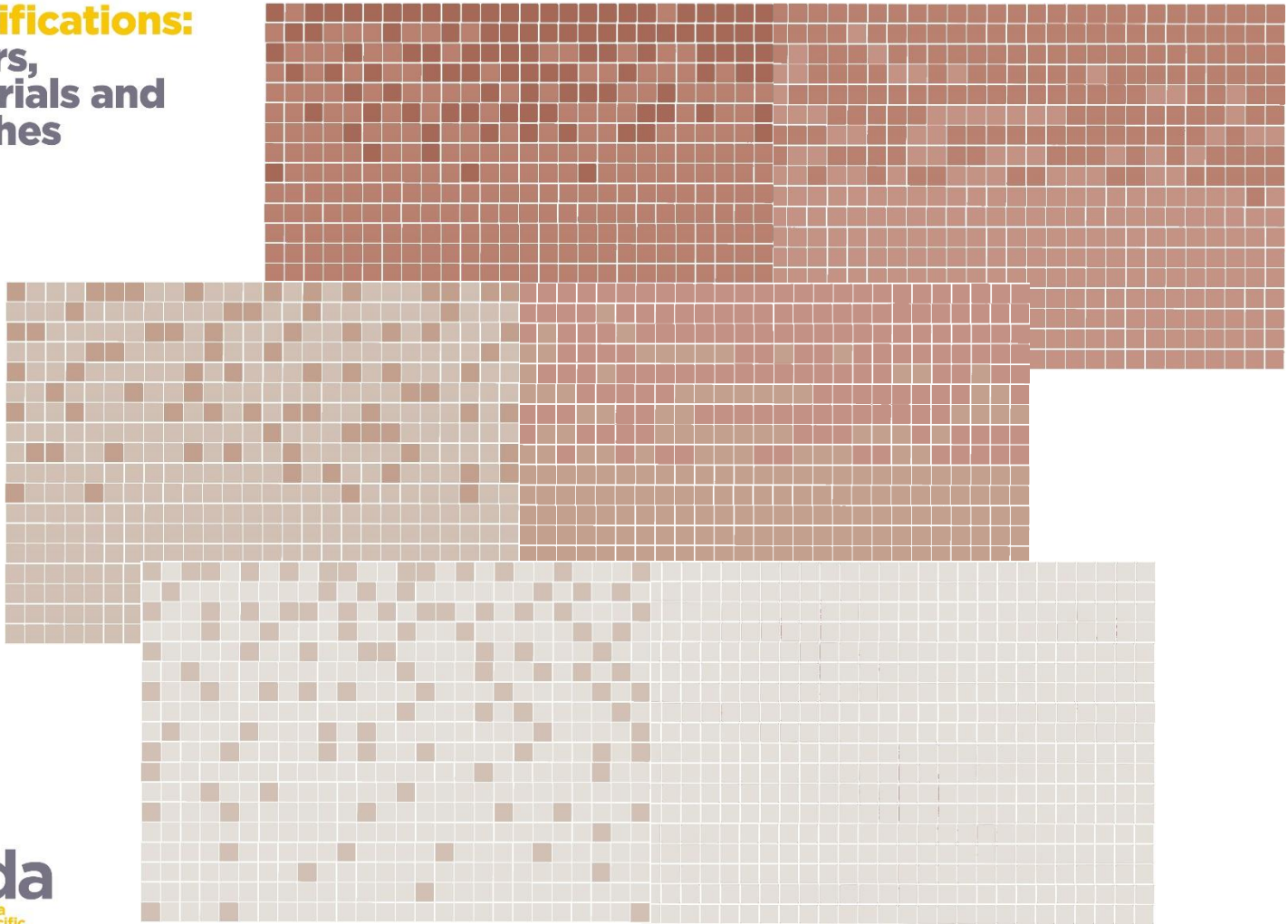
Frosted Glass



Terrazzo with Honed Finish



Specifications: Colors, Materials and Finishes



300x300 mm Mosaic Glass



**American
Standard
Products
Specified**



Acacia Evolution
Paper Holder



Acacia Evolution
Robe Hook



EasySET Exposed Bath & Shower Auto
Temperature Mixer with Shower Kit



250 mm Square Brass
Rain Shower Head



3-Hole Basin Mixer
With Pop-Up Drain



Acacia Evolution
Towel Shelf

**American
Standard
Products
Specified**



City Series 900mm Wall Hung Vanity Cabinet



Acacia SupaSleek One Piece



Space master 200mm side cabinet (Matte white, exposed)

**May Your Idea
Make a Difference
Good luck!**

